





Ziemeļjūras-Baltijas jūras dzelzceļa kravu pārvadājumu koridora paplašināšanas perspektīvas Latvijā

Justīna Hudenko, *Dr. oec.*

AS «LatRailNet» valdes priekšsēdētāja

Rail Baltica



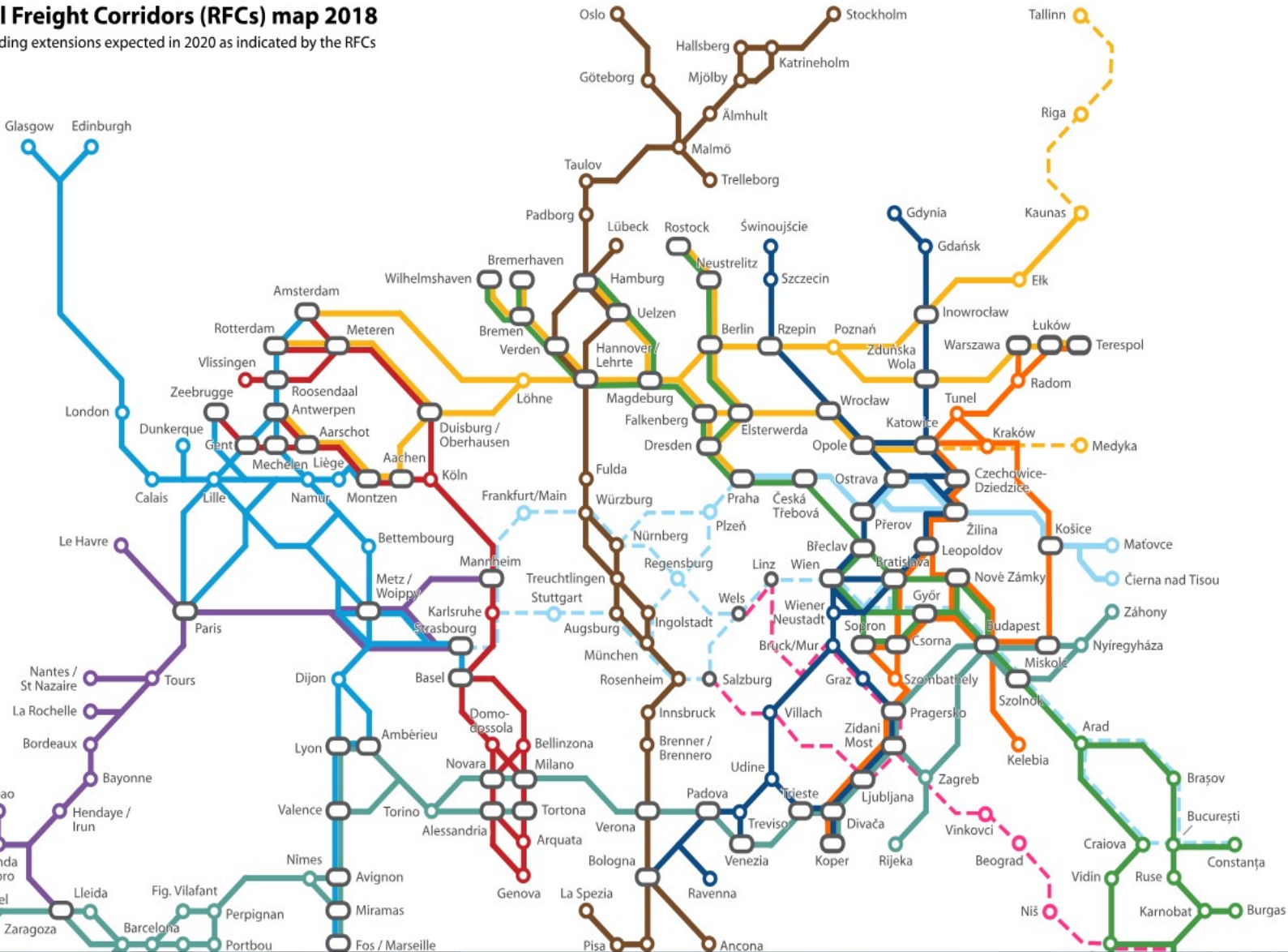


Rail Freight Corridors (RFCs) map 2018

Including extensions expected in 2020 as indicated by the RFCs

- RFC1 Rhine - Alpine
- RFC2 North Sea - Mediterranean
- RFC3 Scandinavian - Mediterranean
- RFC4 Atlantic
- RFC5 Baltic - Adriatic
- RFC6 Mediterranean
- RFC7 Orient / East-Med
- RFC8 North Sea - Baltic
- RFC9 Czech-Slovak / Rhine - Danube
- RFC10 Alpine - Western Balkan
- RFC11 Amber

- Multi-corridor station
- Single-corridor station
- Expected extensions / RFCs



- ✓ RFC 1
Rhine-Alpine
- ✓ RFC 2
North Sea-Mediterranean
- ✓ RFC 3
Scandinavian-Mediterranean
- ✓ RFC 4
Atlantic
- ✓ RFC 5
Baltic-Adriatic
- ✓ RFC 6
Mediterranean
- ✓ RFC 7
Orient/East-Med
- ✓ RFC 8
North Sea-Baltic
- ✓ RFC 9
Czech-Slovak/Rhine-Danube
- ✓ RFC 10
Alpine-Western Balkan
- ✓ RFC 11
Amber



<http://rfc8.eu/>

Latvijas un Igaunijas pievienošanās NSB RFC grafiks

Pilnvērtīgā darbība sākot ar 2020.gada novembrī

Sagatavošanās
2018.g.

- Dalība valdē un padome
- Dalība darba grupās



Pievienošanās
2019.g.

- Pievienošanās valdei un padomei
- Darbs darba grupā
- Apmācība darbam RNE



Darbs
2020.g.

- Iedalīta jauda
- Pievienošanās C-OSS
- Informācija RNE sistēmās



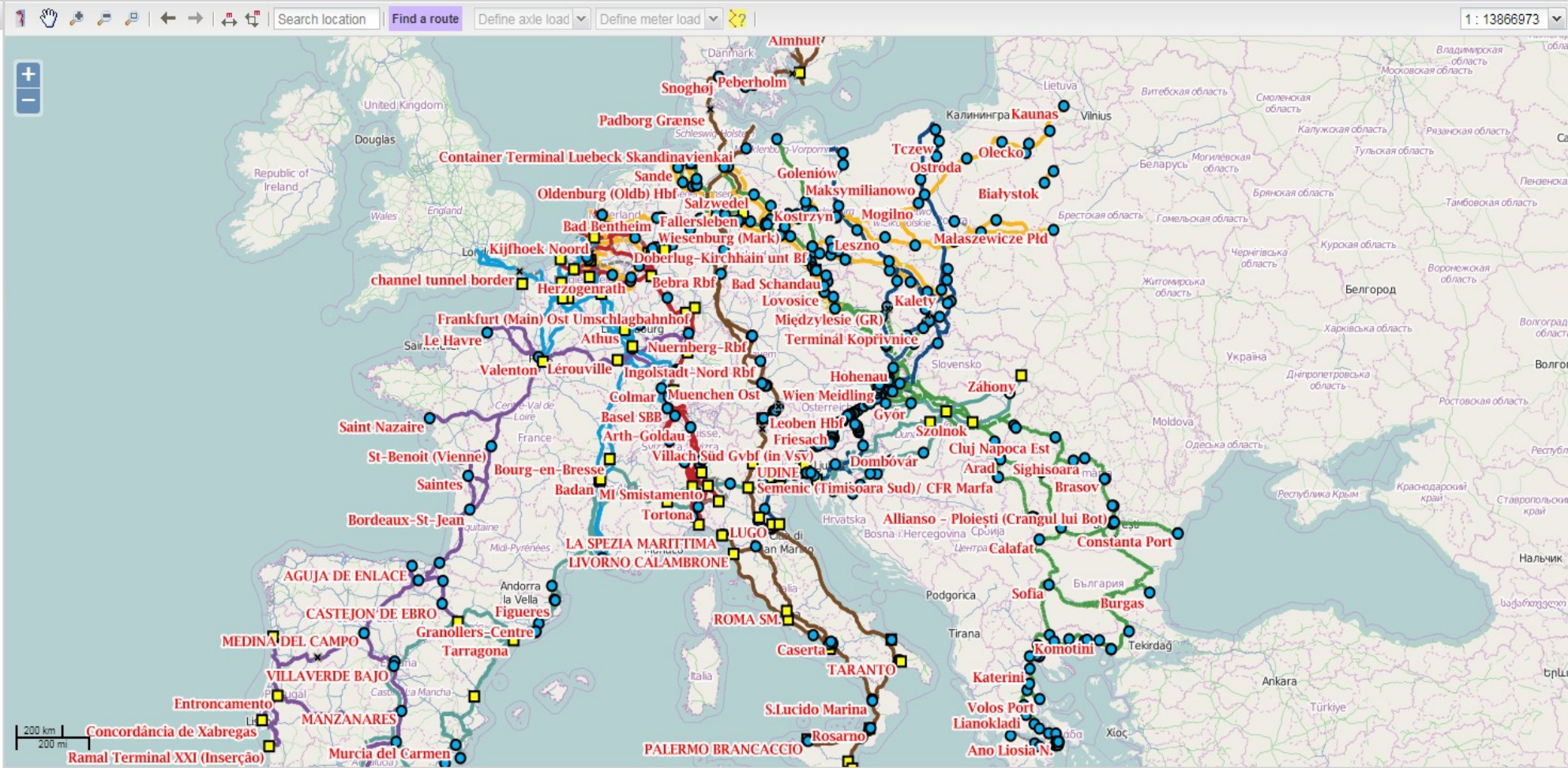
Multi-Corridor View: Dear Customer, please select the Corridor(s), the 'Interactive Map' of which you are interested in and then press the 'Set' button.

All RFCs
 CORRIDOR RHINE-ALPINE
 CORRIDOR NORTH SEA-MEDITERRANEAN
 ScanMed RFC
 ATLANTIC
 RFC5
 MEDITERRANEAN
 RFC7
 Rail Freight Corridor North Sea - Baltic

Public-Map

Options

- Background maps
 - None
 - Google Hybrid
 - OpenStreetMap
- Corridor Locations
 - Terminals
 - Nodes
- Corridor Line
 - None
 - By Rail Freight Corridor
 - Corridor Category
- Line Properties
 - Line Category (Load Model)
 - Traction Power
 - Signalling Groups
 - Intermodal Freight Code
 - Interoperable Gauge
 - Multinational Gauge
 - Gradient (1)
 - Gradient (2)
- ETCS Deployment
 - ETCS Build Status
 - ETCS Deployment Type
 - ETCS Operational Level
 - ETCS System Version
- Projects
 - None
 - Infrastructure
 - Signalling
 - ERTMS



Legend

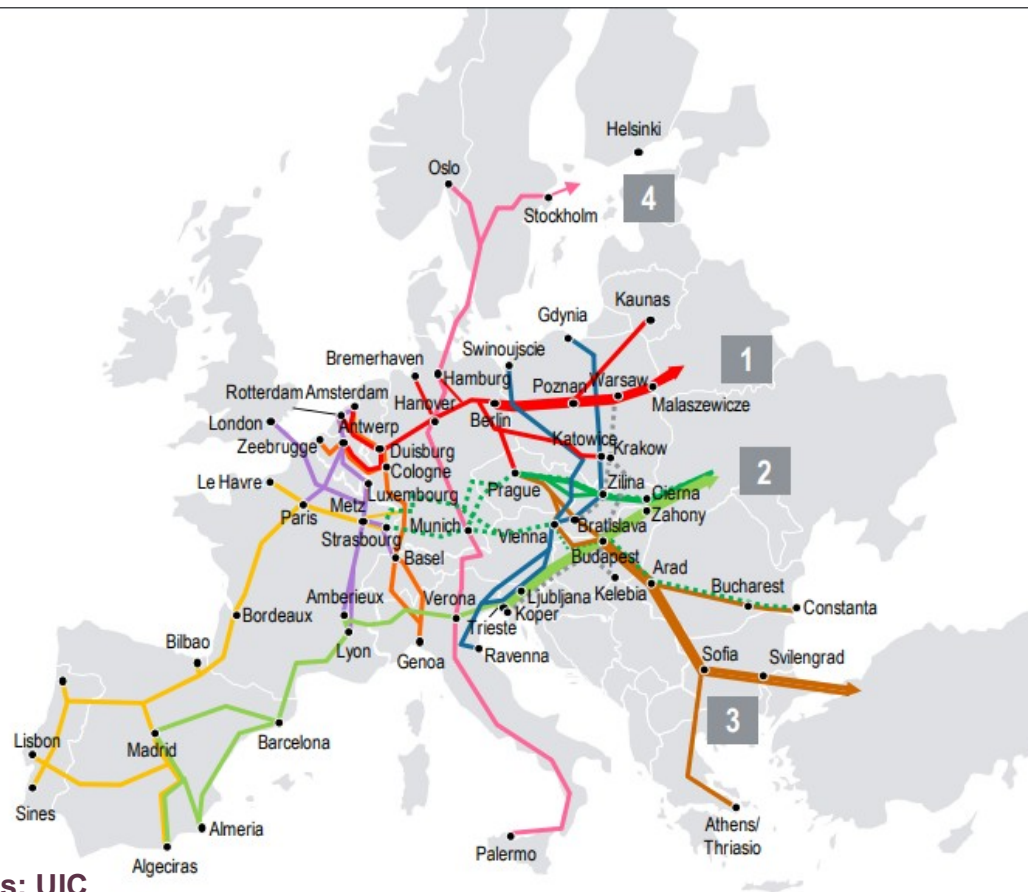
Terminals

- Railway Node or Junction
- Border Point
- Handover Point
- Expected Node

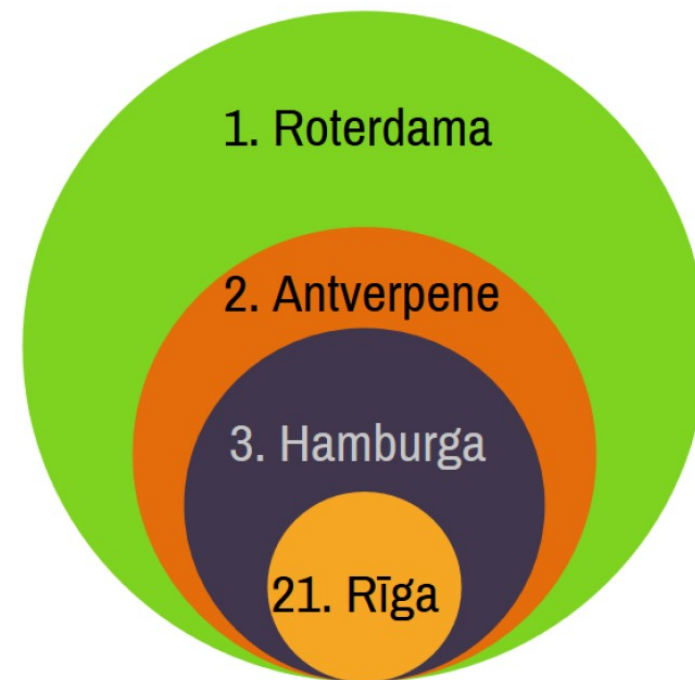
By Rail Freight Corridor

- Rhine-Alpine (RFC1)
- North Sea-Mediterranean (RFC2)
- ScanMed (RFC3)
- Atlantic (RFC4)
- Baltic-Adriatic (RFC5)
- Mediterranean (RFC6)
- Orient/East-Med (RFC7)
- North Sea-Baltic (RFC8)
- expected

Eirāzijas dzelzceļa savienojumi

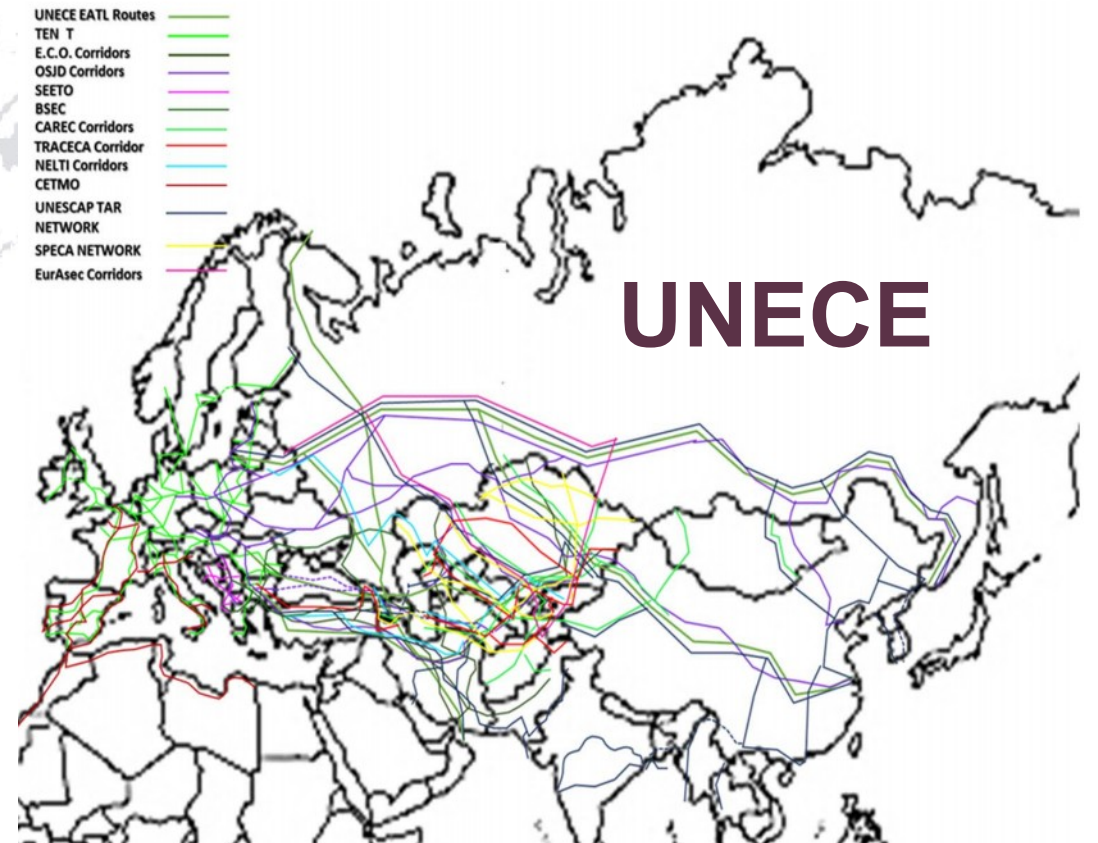


Avots: UIC

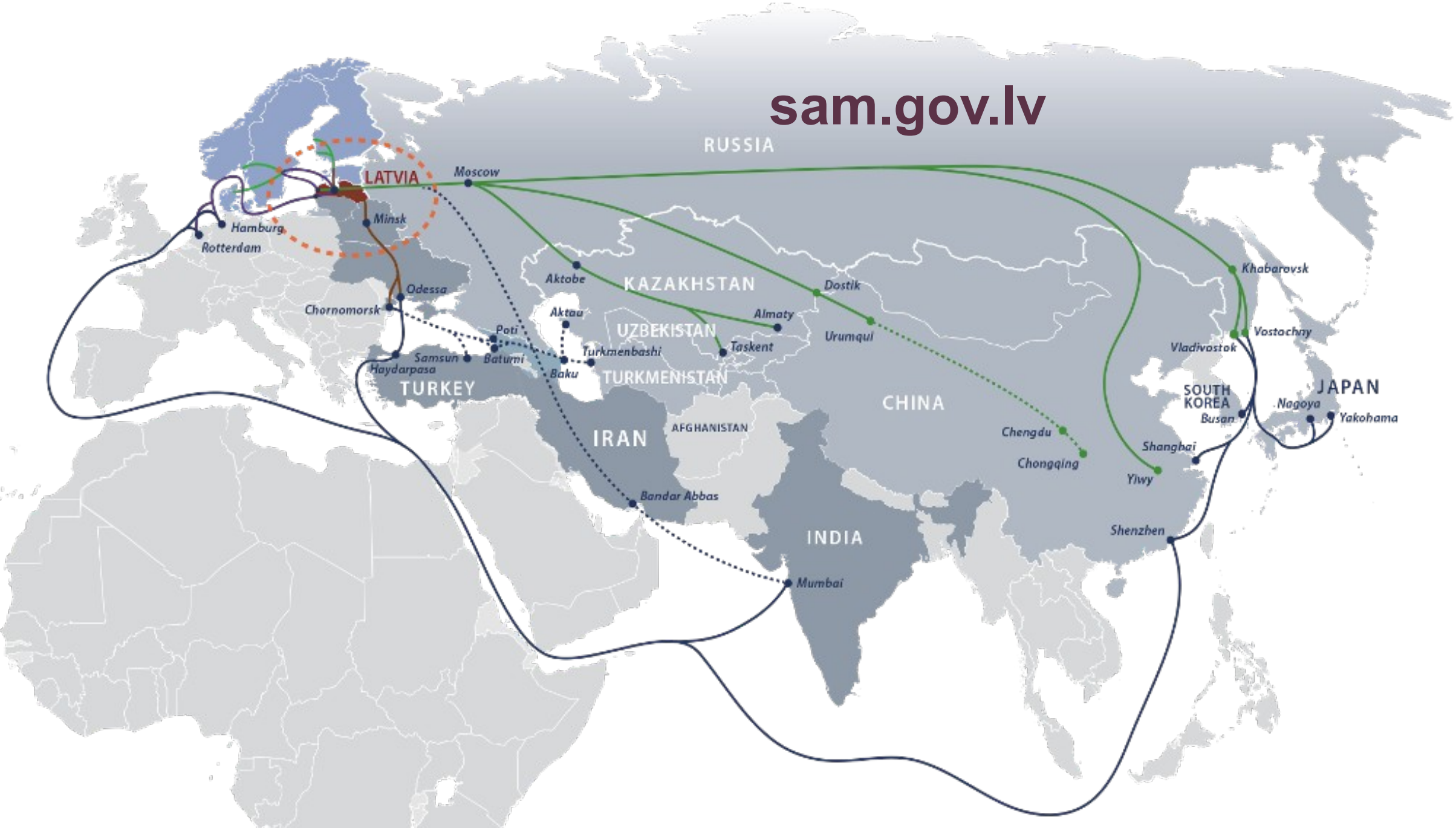


2016. gadā Eiropas Savienības ostās pārkrāva 3 861,6 tūkst. tonnu kravas. Trīs lielākās Eiropas Savienības ostas pārkrauj vairāk kā 1 miljardu tonnu; tās ir Roterdamas osta, Antverpenes osta un Hamburgas osta, attiecīgi ar 431,9 tūkst.t., 198,7 tūkst.t., un 120,3 tūkst.t.

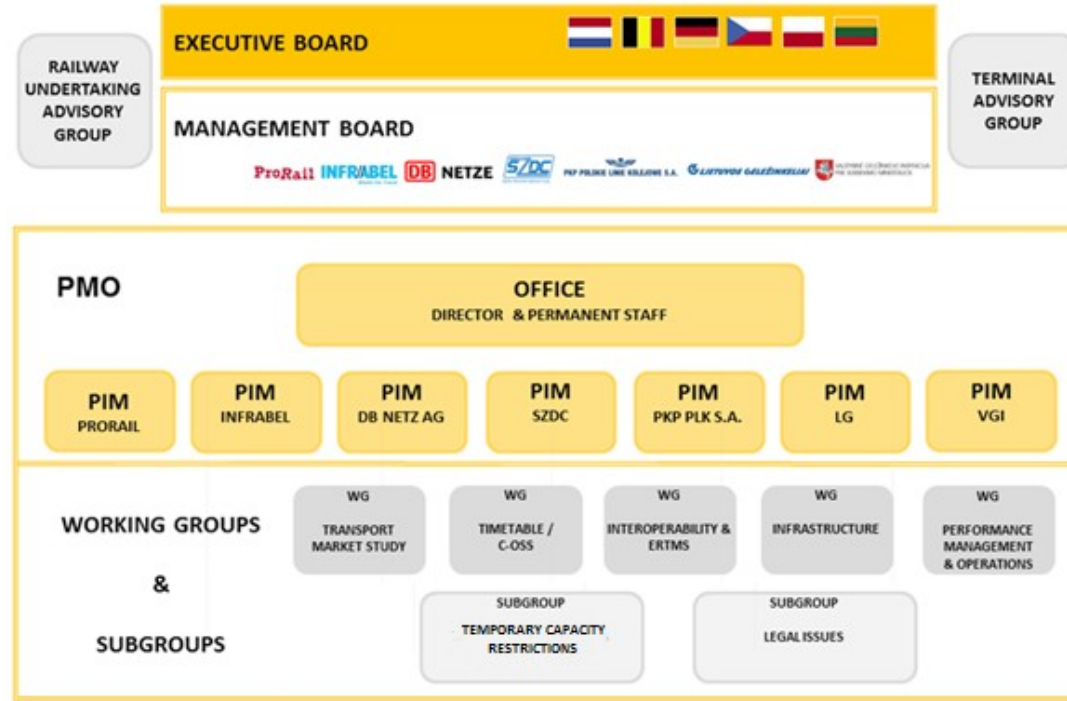
<http://csb.gov.lv>



sam.gov.lv



RAG/TAG dalībnieki



RAILWAY
UNDERTAKING
ADVISORY
GROUP

TERMINAL
ADVISORY
GROUP



**Port of
Rotterdam**



