

An aerial night photograph of a busy industrial port. The scene is illuminated by artificial lights, creating a vibrant blue and white glow against the dark sky. In the foreground, a large cargo ship is docked at a pier, with several smaller tugboats nearby. The pier is equipped with various cranes and industrial structures. In the background, a large body of water stretches towards the horizon, with a city skyline visible in the distance. The overall atmosphere is one of active industrial operations.

**CONNECTION BETWEEN
PORT, AIRPORT AND INDUSTRY**

Uldis Hmielevskis
Liepaja Special Economic Zone Authority



LIEPĀJA – A CITY THAT MELDS THE
SCOPE OF THE WORLD AND THE
COMFORT OF A SMALL TOWN



LIEPĀJA – A PROOF, THERE IS A PLACE IN LATVIA OUTSIDE ITS CAPITAL WITH THE OUTSTANDING LIVING SPACE AND COMPETITIVE BUSINESS ENVIRONMENT



WELL-DEVELOPED AREAS



BUSINESS
OPPORTUNITIES



INFRASTRUCTURE



EDUCATION
OPPORTUNITIES



BROAD SPECTRUM OF
CULTURE AND SPORT
ACTIVITIES



LONG STANDING TRADITIONS

- ✓ METAL PROCESSING
- ✓ MECHANICAL ENGINEERING
- ✓ SUPPLY AND LIGHT INDUSTRY

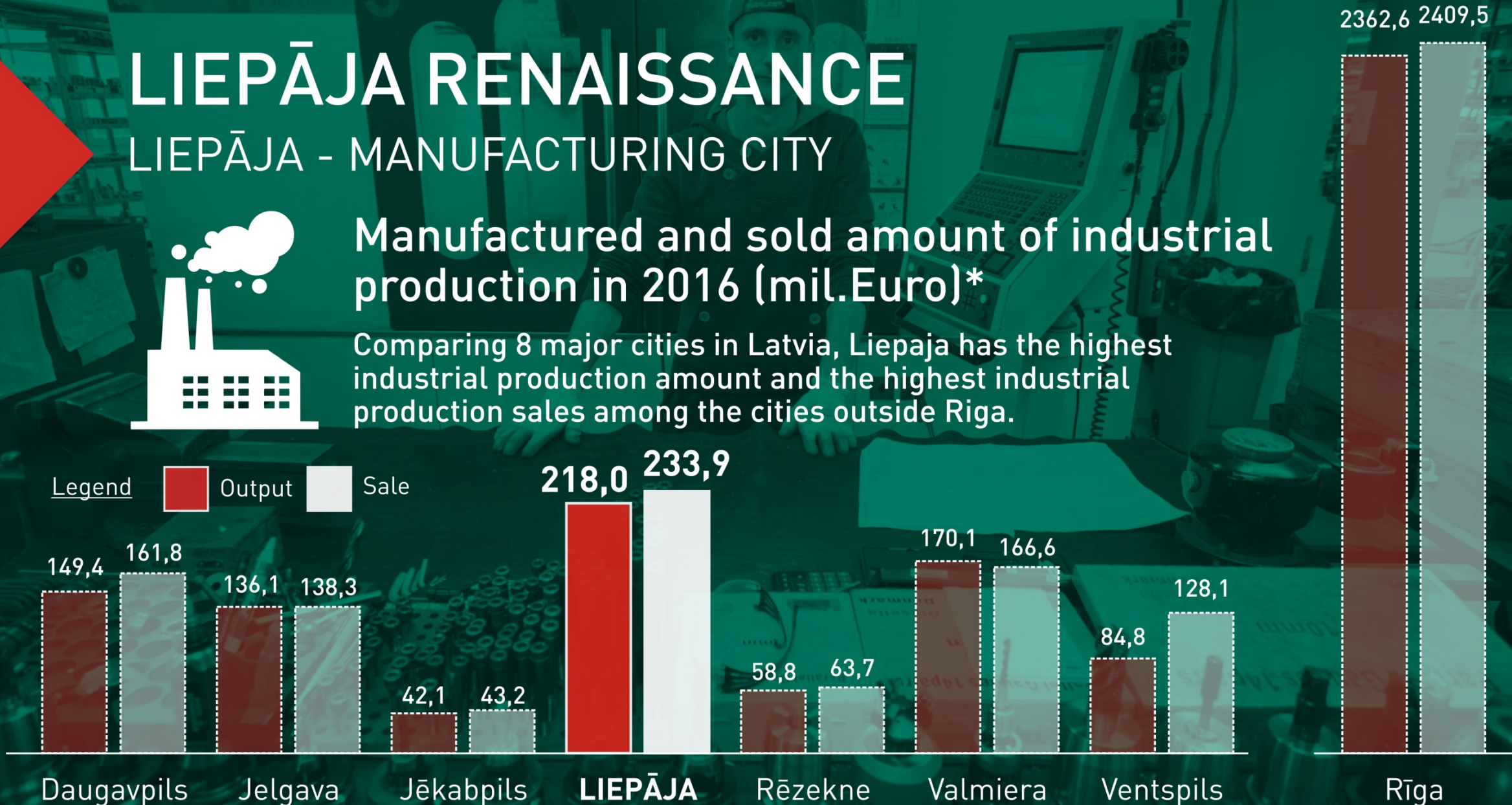
LIEPĀJA RENAISSANCE

LIEPĀJA - MANUFACTURING CITY



Manufactured and sold amount of industrial production in 2016 (mil.Euro)*

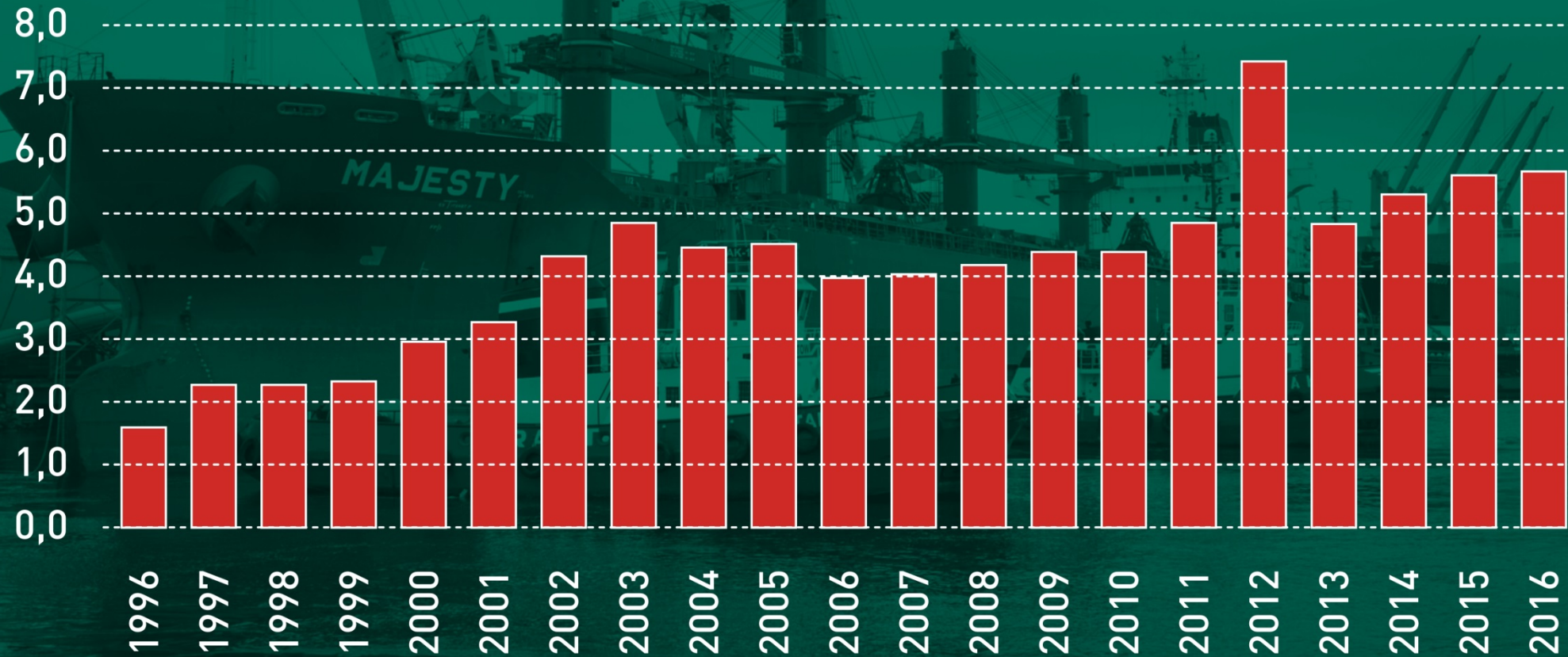
Comparing 8 major cities in Latvia, Liepaja has the highest industrial production amount and the highest industrial production sales among the cities outside Riga.



*Information source: LR Central Statistical Bureau, the Industrial Statistics Section.

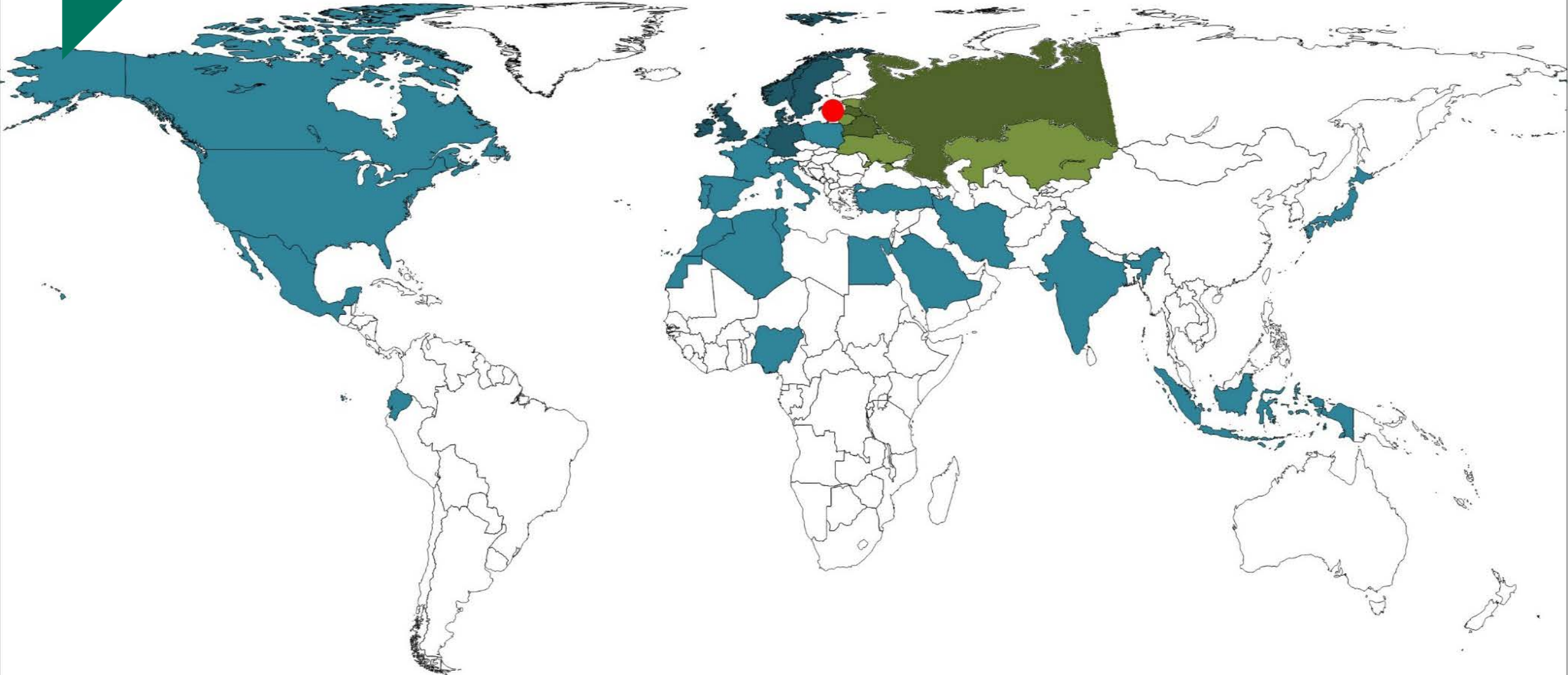
LIEPAJA – THE PORT CITY

Liepaja port handled cargo (million tons)





IMPORT AND EXPORT DIRECTIONS



● - Liepaja port

■ - main export countries
■ - other export countries

■ - main import countries
■ - other import countries



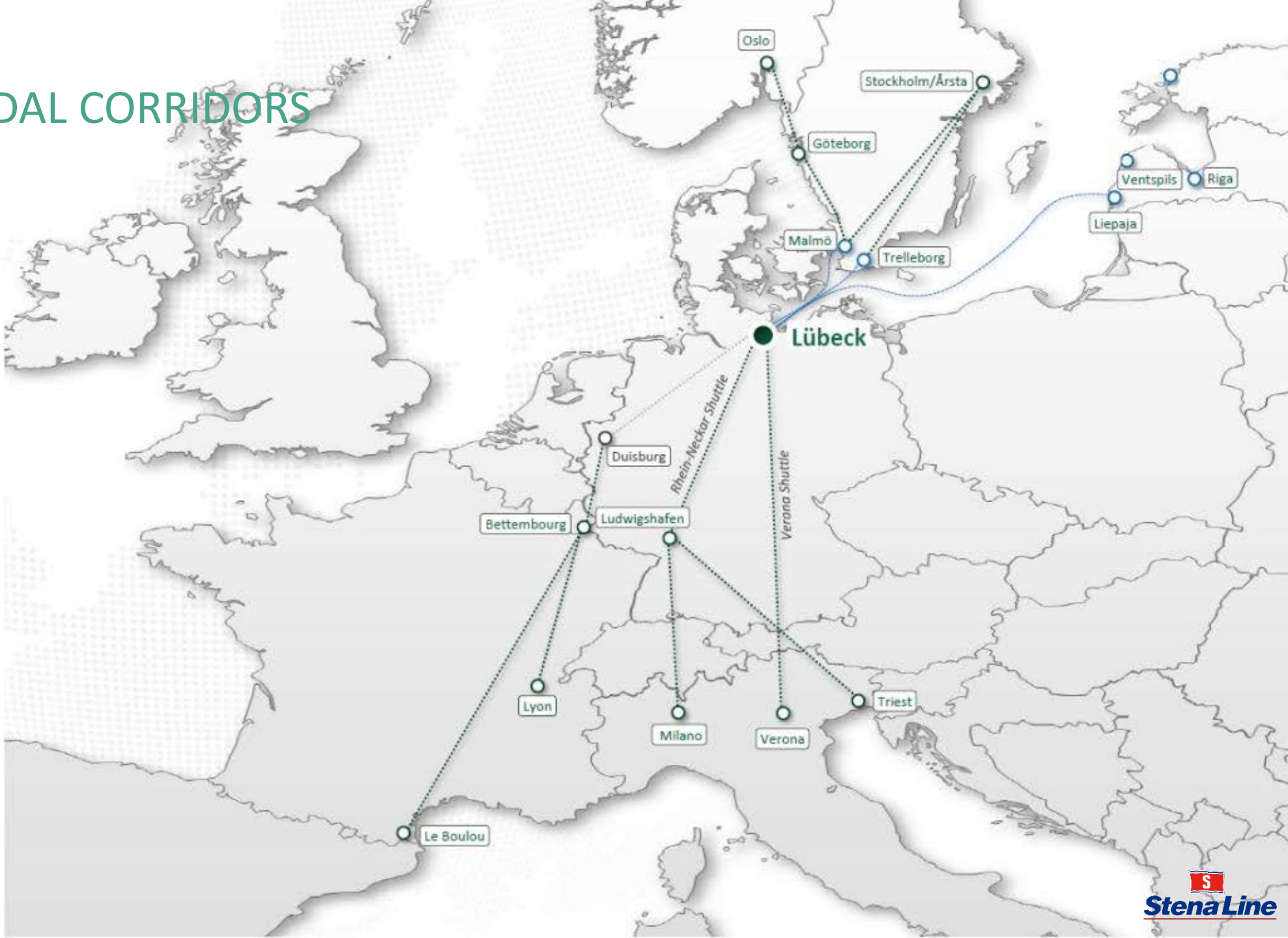
MULTIMODAL CORRIDORS

- Stena Line
- Stena SeaLine
- Container train ZUBR
- Container train Baltic-Transit
- Transsiberian Railway Route





MULTIMODAL CORRIDORS





CONCRETE MANUFACTURING AND LOGISTICS

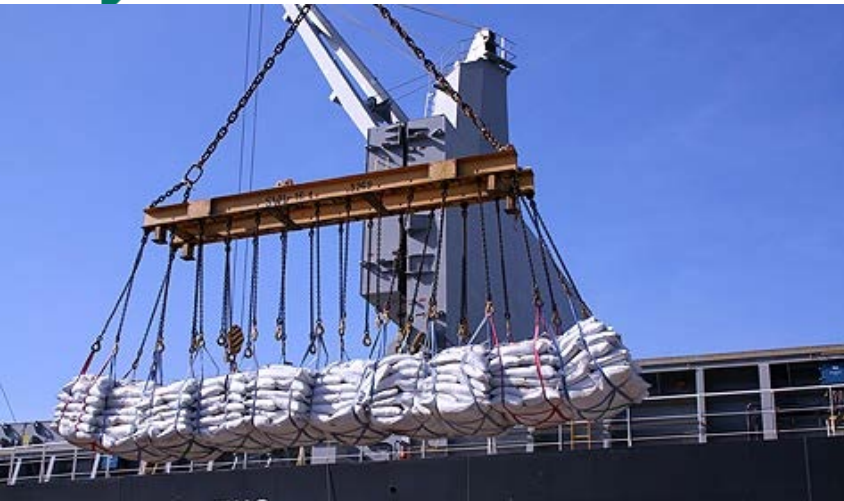




CEMENT LOGISTICS



FERTILIZERS



GRAIN



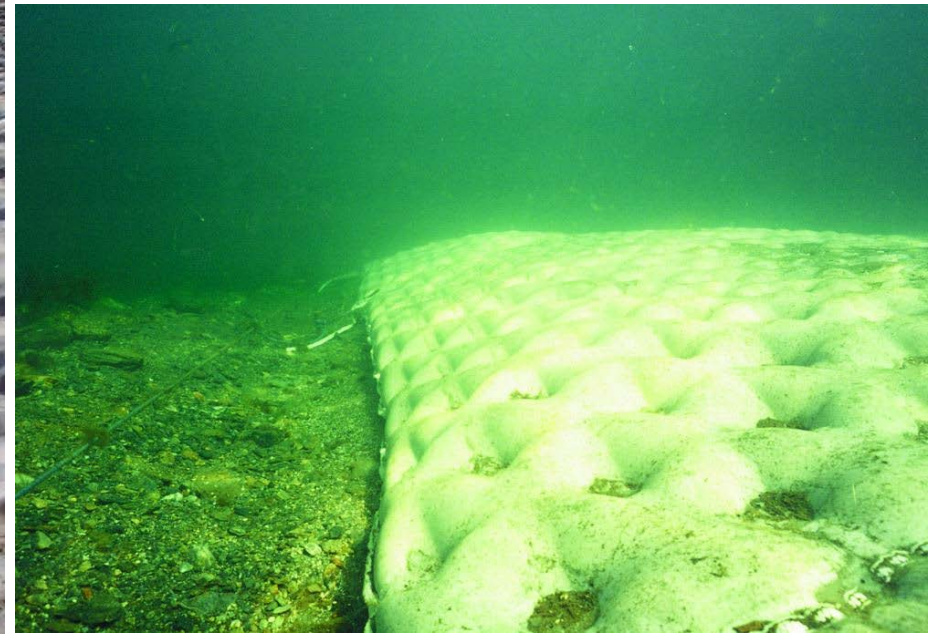


SCRAP METAL AND STEEL





SOIL REINFORCEMENT & EROSION CONTROL





SHIP BUILDING AND SHIP SERVICES





SHIP BUILDING AND SHIP SERVICES





Lidojumi Liepāja-Rīga no 16.maija

Cenas sākot no 15 EUR

Ieplāno vasaru un kādu no 60 Eiropas galamērķiem

Liepāja

Rīga



LIEPĀJA ✈ RĪGA ✈ LIEPĀJA

PIRMDIEN:
LIEPĀJA 05:45 ✈ 06:25 RĪGA

OTRDIEN:
RĪGA 23:25 ✈ 00:05 LIEPĀJA

TREŠDIEN:
LIEPĀJA 05:45 ✈ 06:25 RĪGA

CETURTDIEN:
RĪGA 23:25 ✈ 00:05 LIEPĀJA

PIEKTDIEN:
LIEPĀJA 05:45 ✈ 06:25 RĪGA

SVĒTDIEN:
RĪGA 23:25 ✈ 00:05 LIEPĀJA





THE LIEPAJA SPECIAL ECONOMIC ZONE

Established in 1997

65% of the entire territory of the city and the airport



THE BELOW MENTIONED TAX INCENTIVES ARE PROVIDED AGAINST INVESTMENT:

80% rebate on the corporate income tax
80-100% rebate on the property tax

✓ 41 capital companies

✓ 2050 workplaces

✓ The average salary is higher than in the rest of Latvia



CONSISTENT STATE AID PROGRAMME FOR THE DEVELOPMENT OF ENTREPRENEURSHIP:

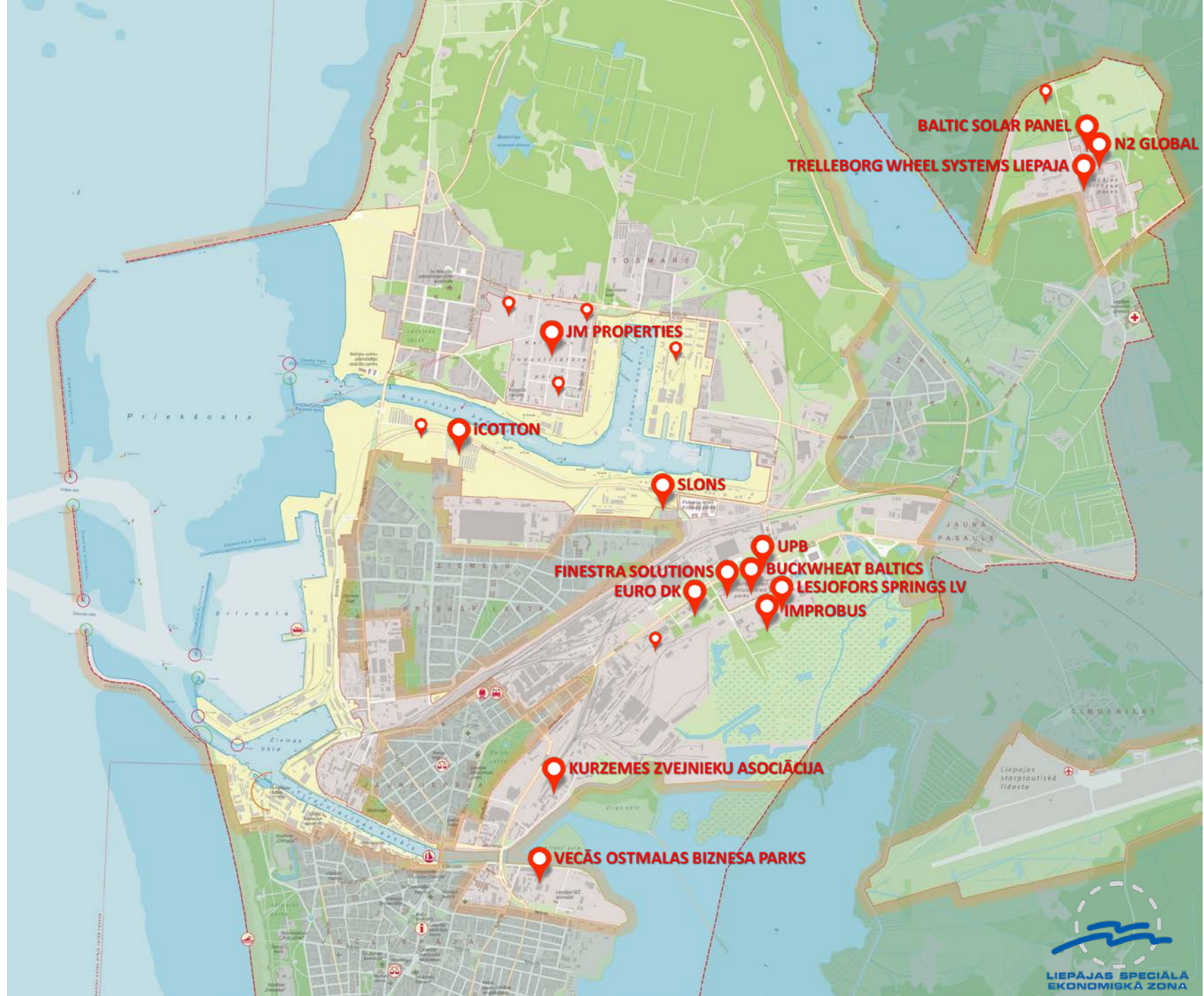
35% to large companies
45% medium sized companies
55% small companies

✓ Goods and services - 168 million € per year



NEW FACTORIES IN LIEPAJA 2017-2018

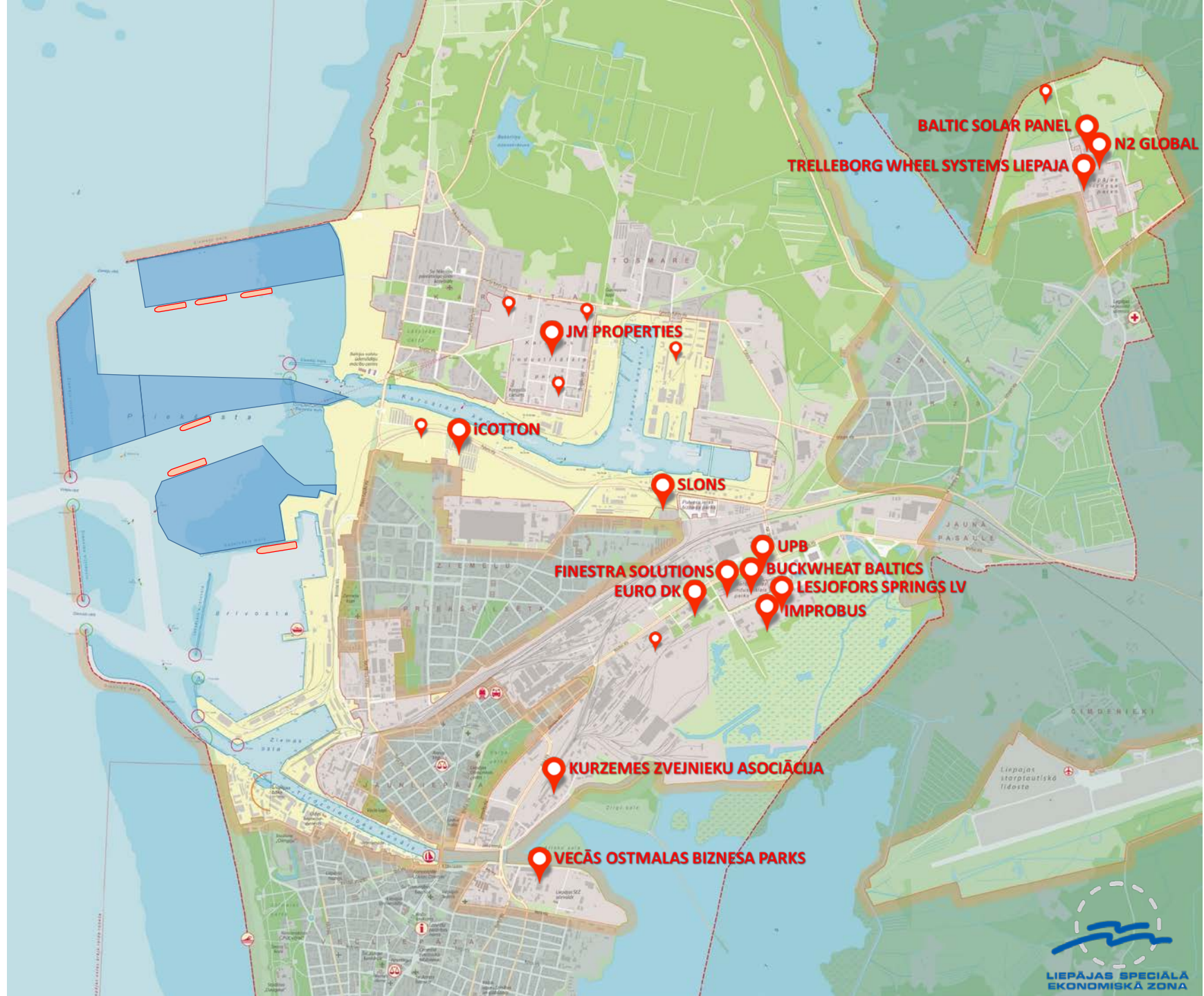
- BALTIC SOLAR FACTORY**
Saules elektropaneļu ražotne
- BUCKWHEAT BALTICS**
Griķu pārstrādes ražotne
- EURO DK**
IT tehnoloģiju loģistikas centrs
- FINESTRA SOLUTIONS**
Logu konstrukciju ražotne
- ICOTTON**
Autiņbikšišu ražotne
- IMPROBUS**
Zivju produkcijas ražotne
- JM PROPERTIES**
Metāla izstrādājumu ražotne
- KURZEMES ZVEJNIEKU ASOCIĀCIJA**
Zivju produkcijas noliktava
- LESJOFORS SPRINGS LV**
Metāla izstrādājumu ražotne
- N2 GLOBAL**
Ugunsdzēsamo aparātu ražotne
- SLONS**
Metāla konteineru ražotne
- TRELLEBORG WHEEL SYSTEMS LIEPAJA**
Riteņu disku ražotne
- UPB**
Loģistikas centrs
- VECĀS OSTMALAS BIZNESA PARKS**





FUTURE DEVELOPMENT – PORT MANUFACTURING

- Aprox 200 ha
- New port terminals
- New factories – port manufacturing









LIEPĀJA
INSPIRES!

LIEPAJA SPECIAL
ECONOMIC ZONE

E-mail: lsez@lsez.lv
www.liepaja-sez.lv



LIEPĀJA



LIEPAJA SPECIAL
ECONOMIC ZONE